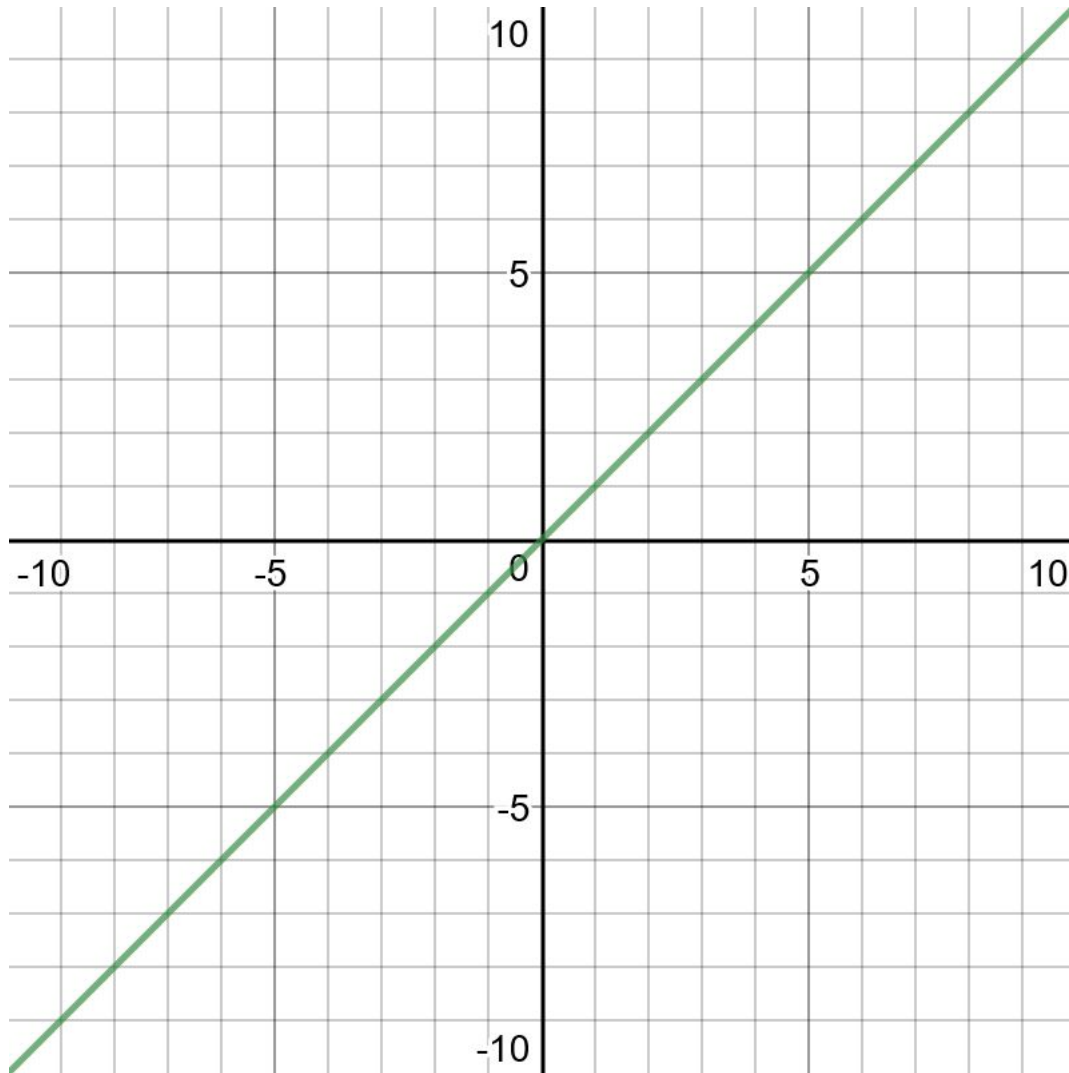


□ 1.3 Exploring Properties of Parent Functions
Class notes and links for MCR3U Period One class

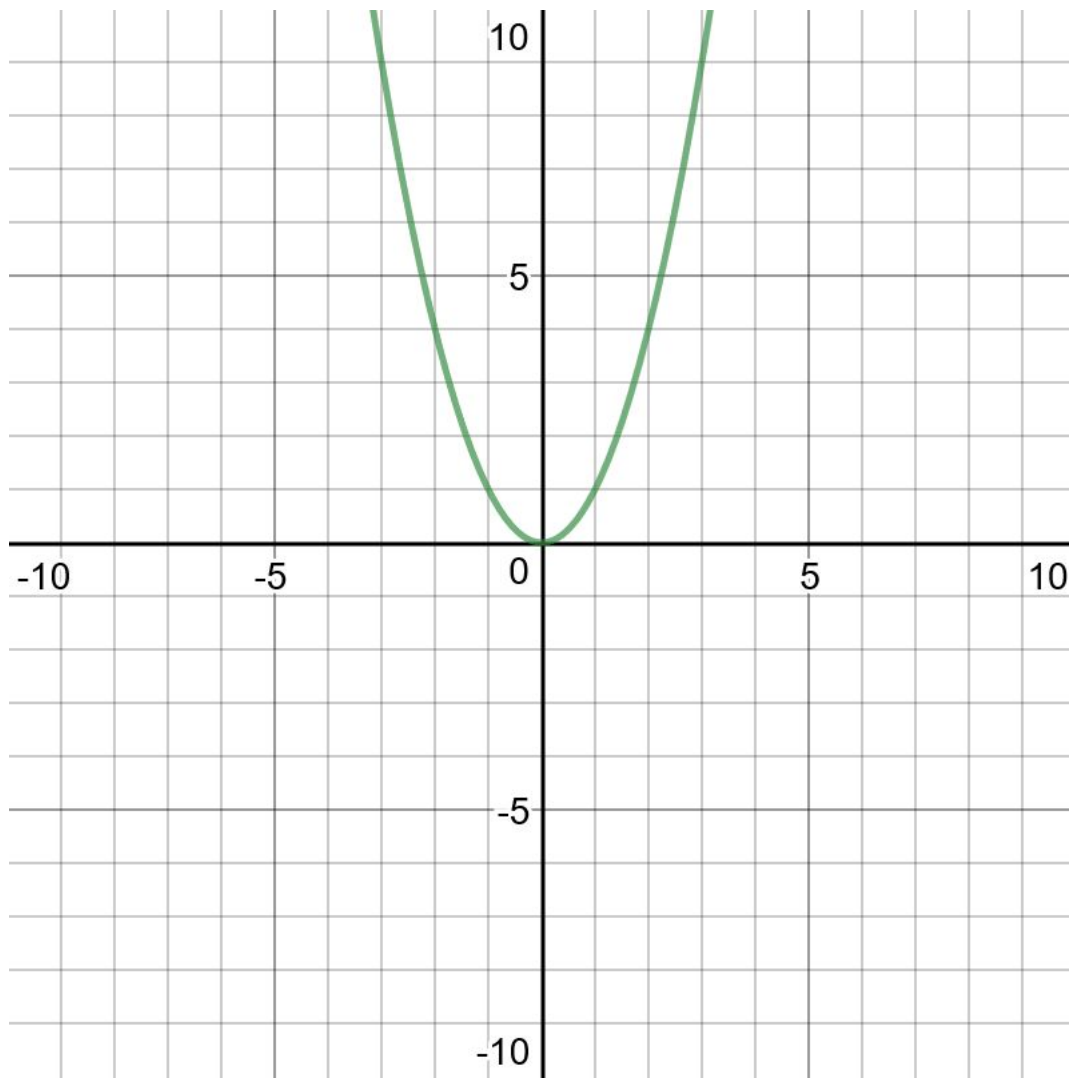
Linear Function



Domain: $\{x \in \mathbb{R}\}$

Range: $\{y \in \mathbb{R}\}$

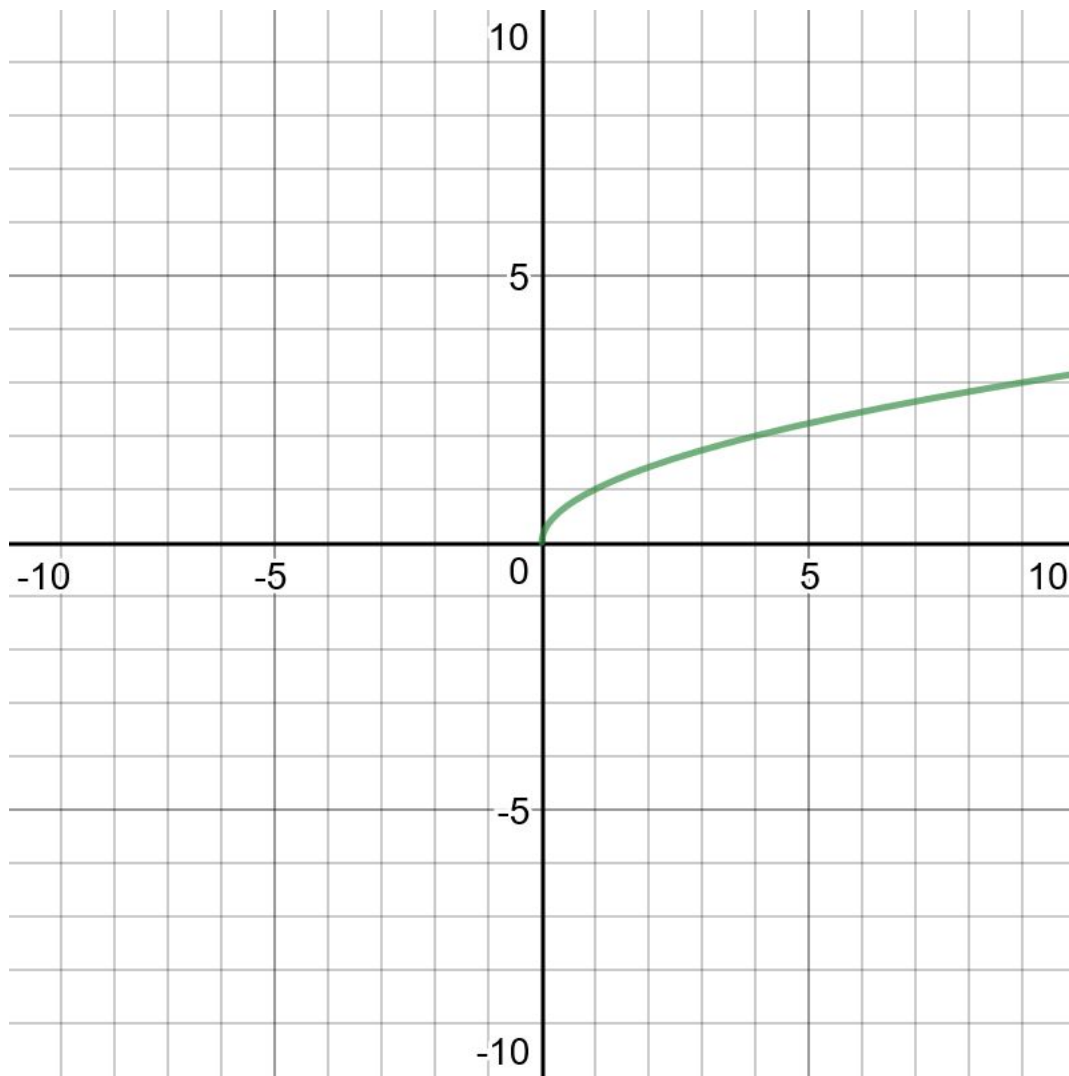
Quadratic Function



Domain: $\{x \in \mathbb{R}\}$

Range: $\{y \in \mathbb{R} \mid y \geq 0\}$

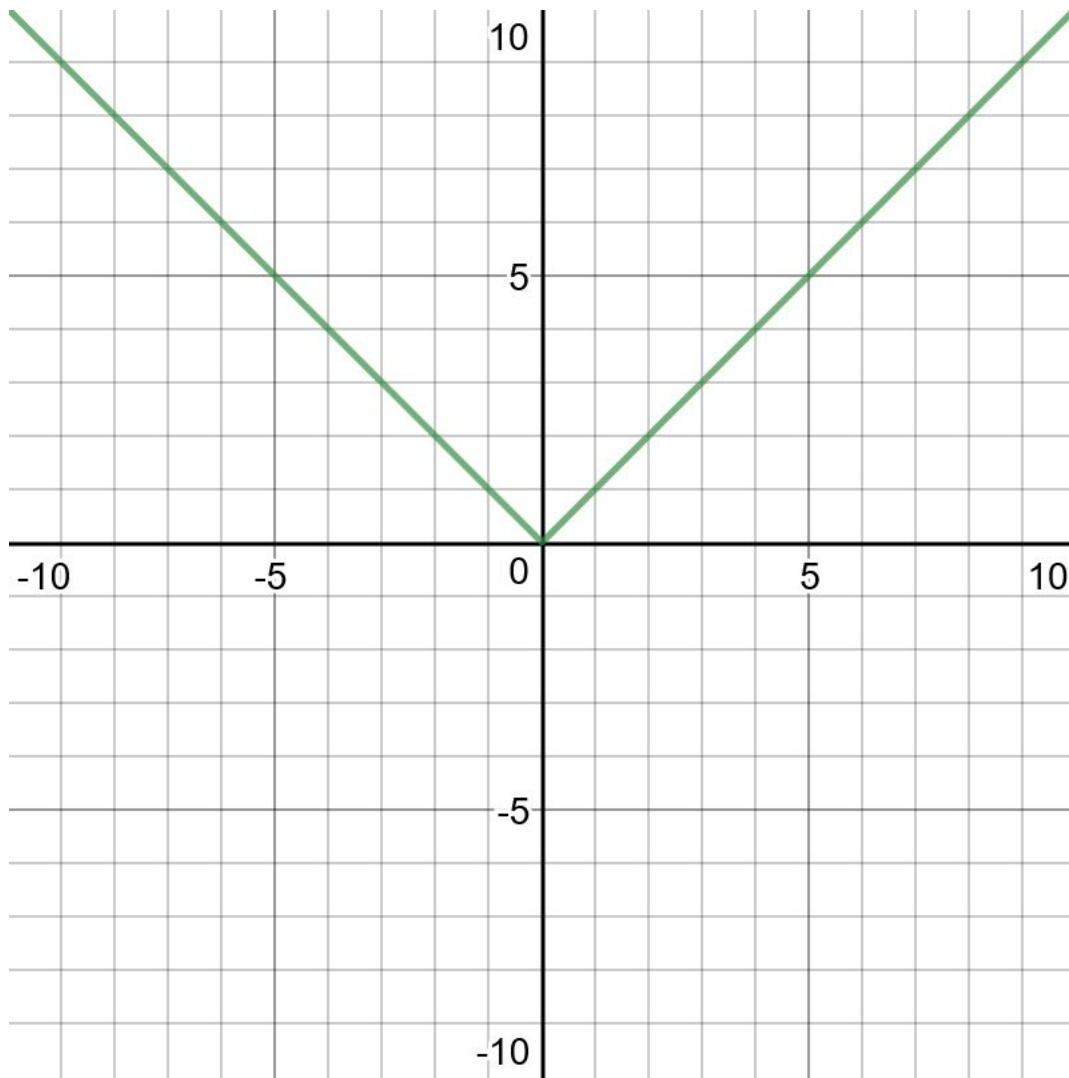
Square Root Function



Domain: $\{x \in \mathbb{R} \mid x \geq 0\}$

Range: $\{y \in \mathbb{R} \mid y \geq 0\}$

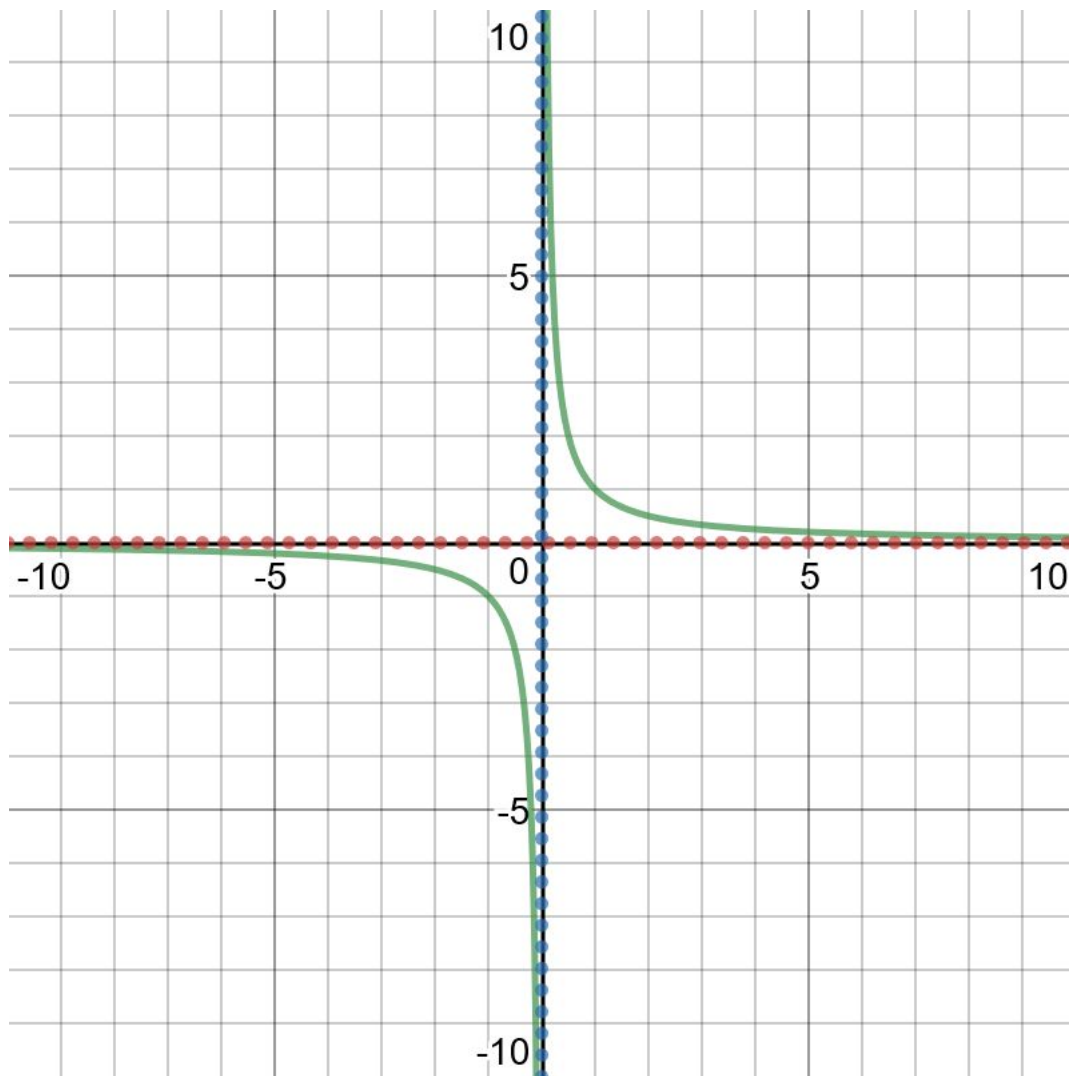
Absolute Value Function



Domain: $\{x \in \mathbb{R} \mid x \geq 0\}$

Range: $\{y \in \mathbb{R} \mid y \geq 0\}$

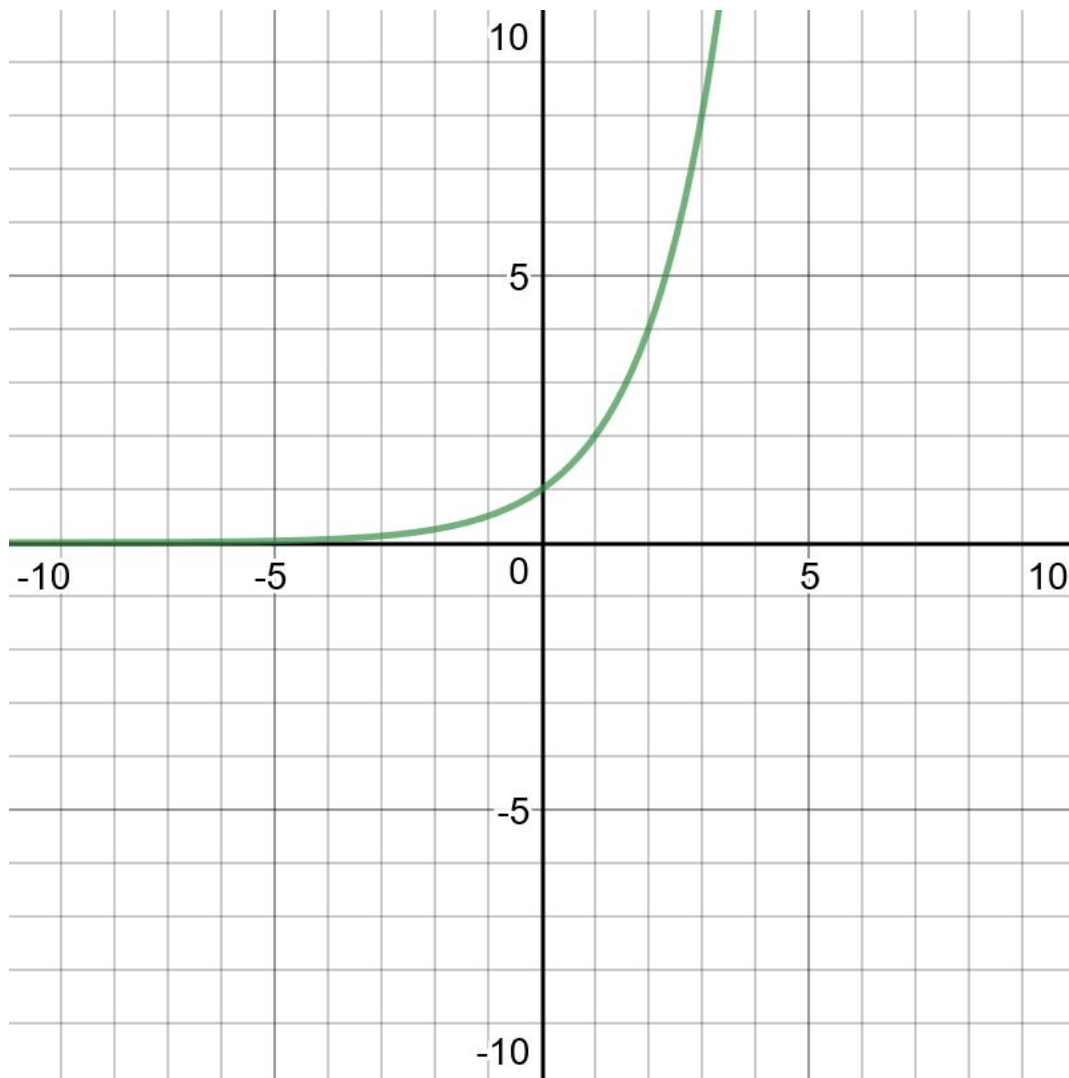
Reciprocal Function



Domain: $\{x \in \mathbb{R} \mid x \neq 0\}$

Range: $\{y \in \mathbb{R} \mid y \neq 0\}$

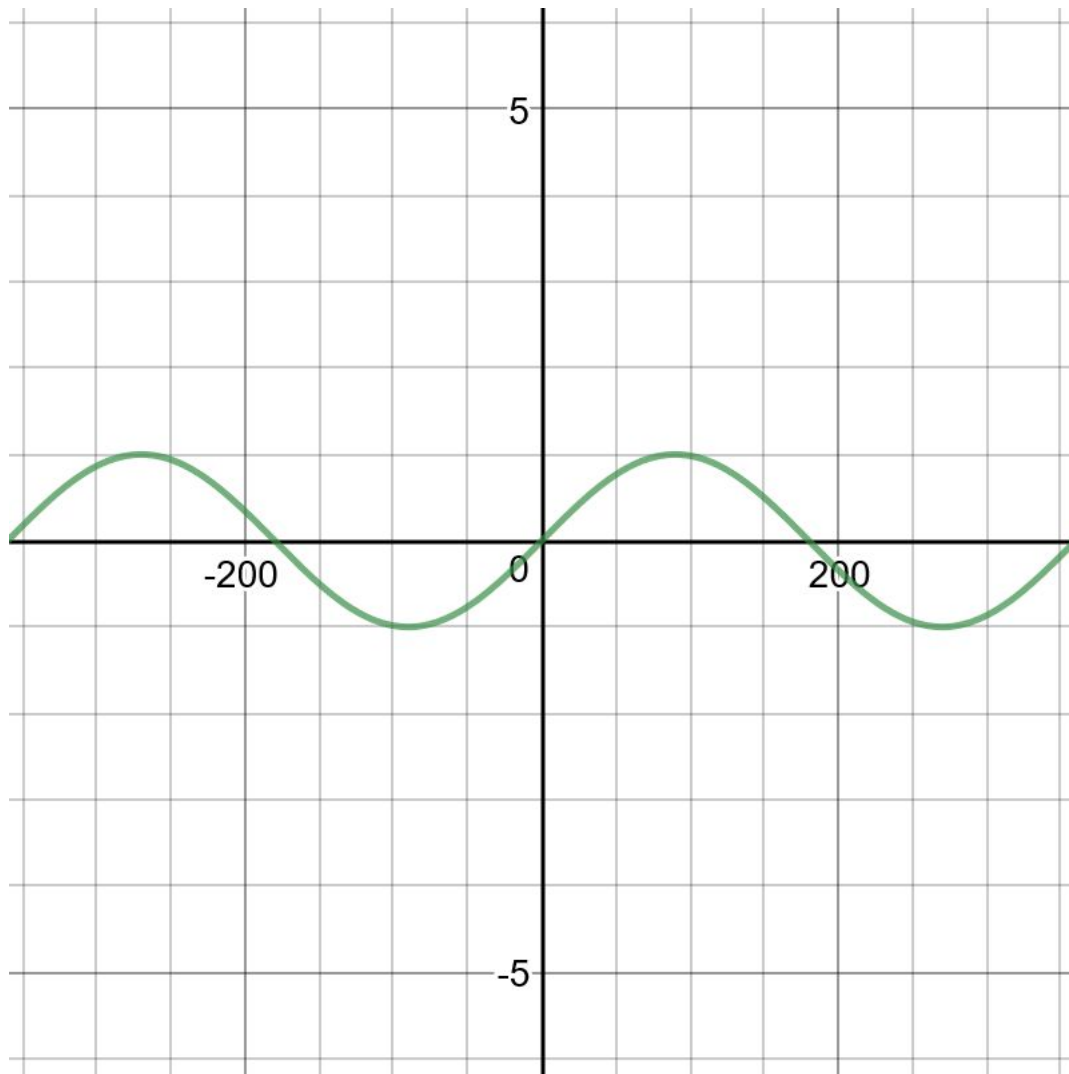
Exponential Function



Domain: $\{x \in \mathbb{R}\}$

Range: $\{y \in \mathbb{R} \mid y > 0\}$

Sinusoidal Function



Domain: $\{x \in \mathbb{R}\}$

Range: $\{y \in \mathbb{R} \mid -1 \leq y \leq 1\}$